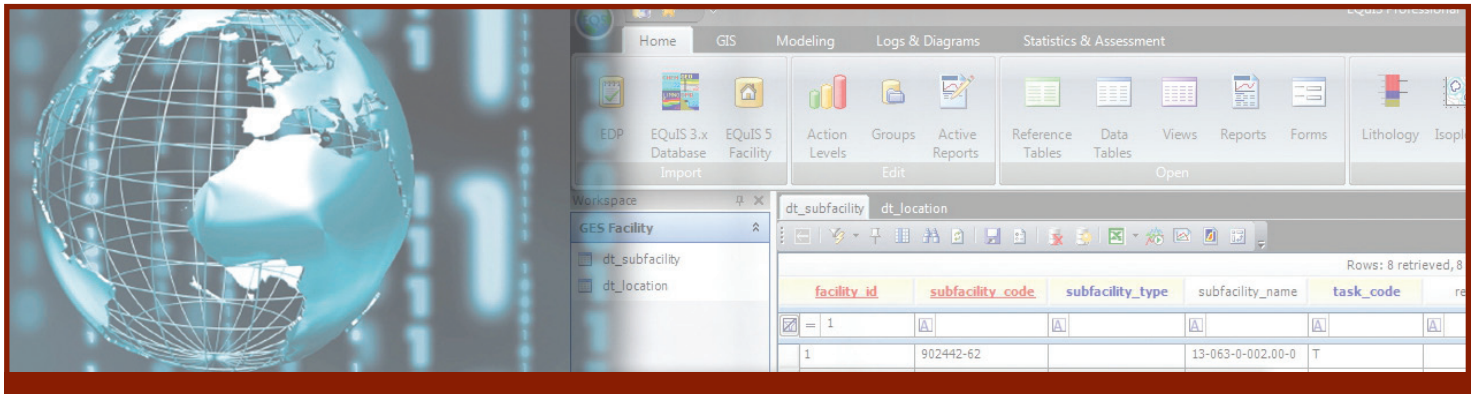


# EQuIS DATABASE SERVICES

*efficiently managing pre-drill data*



GES, environmental consultant to many of the nation's leading oil & gas companies, helps our clients implement solutions to their data management and regulatory reporting challenges. We offer assistance in the integration and management of EarthSoft's Environmental Quality Information System (EQuIS). EQuIS is an advanced data management and decision support system for all kinds of water, air, geotechnical, and other environmental data.

With our team of database specialists, we have been able to offer innovative solutions that help our clients realize their data quality objectives and regulatory obligations. We have proven abilities in the field of environmental informatics, database management, GIS, and hands-on experience serving the oil and gas industry with pre-drill sampling and a host of services aimed at compliance, safety, and efficiency.

GES can facilitate a smooth transition to EQuIS. Our solutions range from consulting assistance and training services to complete turnkey software customization and implementation based on your specific business needs. GES can also assist with implementation of other EQuIS add-ons such as Sample Planning Module (SPM) and EQuIS Data Gathering Engine (EDGE) to facilitate field data collection and chain of custody management. From field to laboratory to electronic reporting, GES can help streamline your company's data management and unleash true cost savings through automation. We'll guide you through the process, step by step.

GES is proud of our role in America's energy evolution, protecting our environment while creating family sustaining jobs and securing energy independence. We offer a wide range of services with a consistent focus on safety, liability management, and practical solutions that yield sustainable results.

EQuIS Implementation by the GES team :

- software components
- data mapping
- format files
- business rules
- nomenclature
- reference values
- user roles
- EDP
- SPM
- EDGE

